



# The best cities ranking

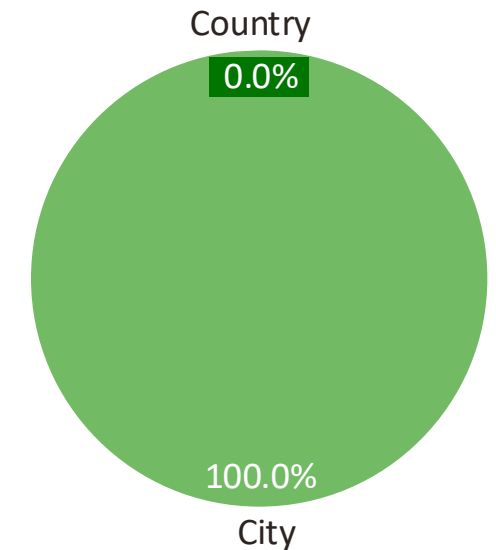
Best cities ranking computed based on your preferences, national culture and political values profile

# Your preferences structure

## Structure of your preferences, parameters used to measure them

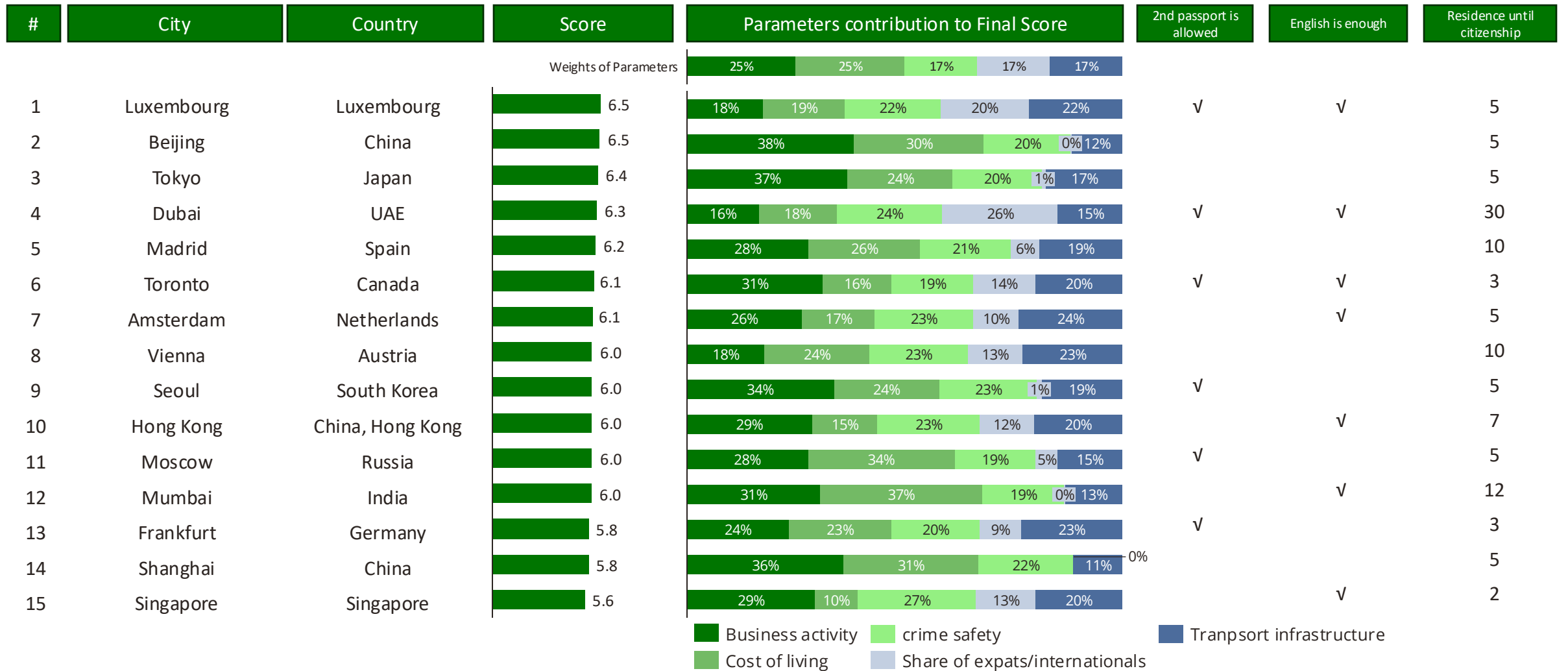
Criteria	Weight	Indicators	Уровень	Sources
<b>Business activity</b>	25%	Fortune 500 HQs	City	Fortune 500, methodology by Greener
		Fortune 500 Revenue	City	Fortune 500, methodology by Greener
<b>Cost of living</b>	25%	Low cost of living (including rent)	City	Собственные расчеты Greener
<b>crime safety</b>	17%	Crime Safety Perception	City	methodology by Greener
<b>Share of expats/internationals</b>	17%	Share of foreign born population	City	methodology by Greener
<b>Transport infrastructure</b>	17%	Transport Infrastructure	City	methodology by Greener

## Parameters: county vs. city



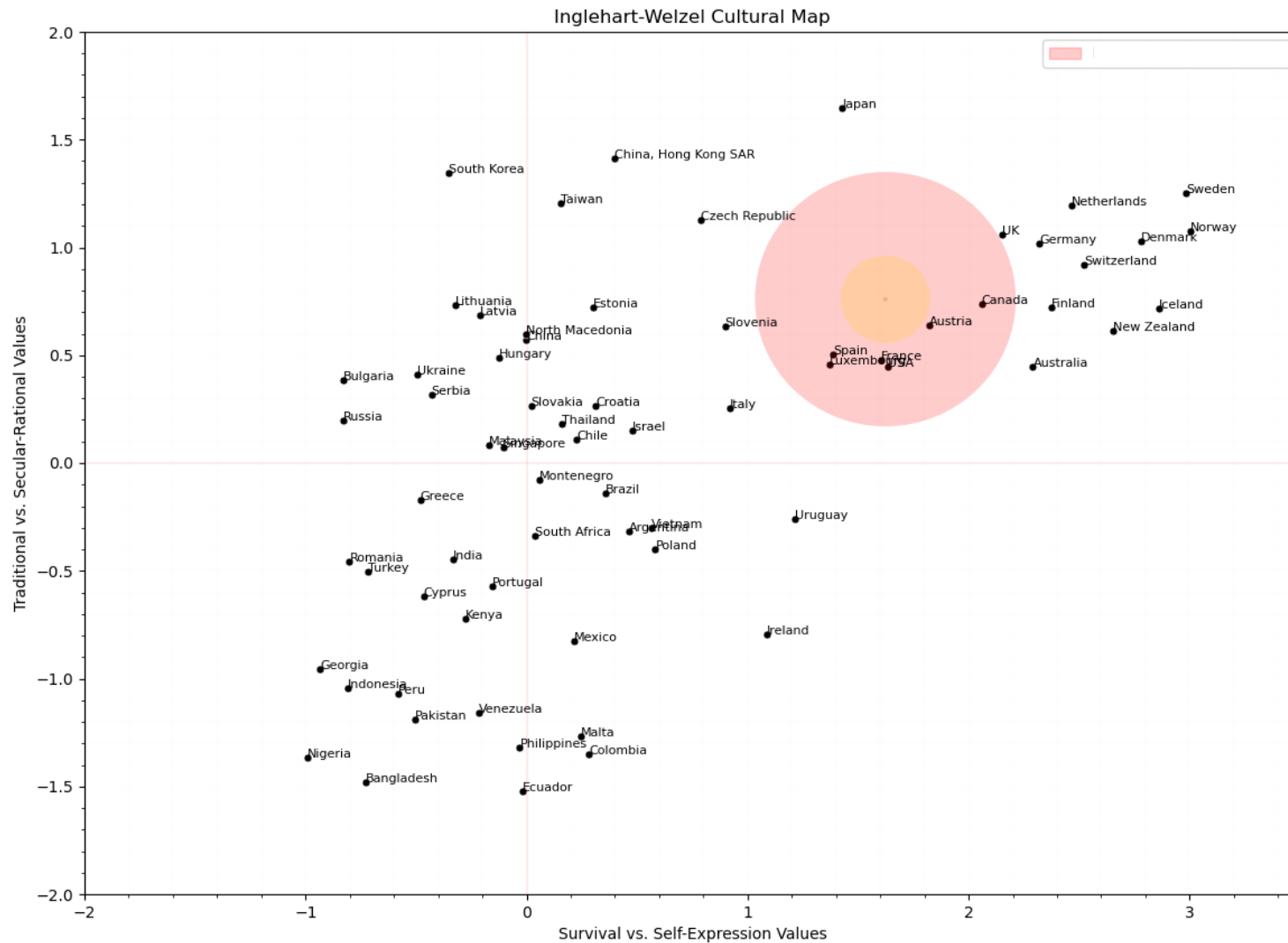
## Filters

# Top cities based on your preferences: Luxembourg, Beijing, Tokyo, Dubai



<sup>1</sup> All indicators are rated on a scale from 0 to 10, where 10 represents the best value. The closer the final score is to 10, the better the city aligns with the client's preferences.

# The countries closest to you with respect to your political values



## Top-15 countries closest to your profile

#	Country	Score
1	Austria	10.0
2	France	9.8
3	USA	9.7
4	Spain	9.6
5	Luxembourg	9.5
6	Canada	9.4
7	UK	8.8
8	Slovenia	8.4
9	Australia	8.4
10	Germany	8.4
11	Finland	8.3
12	Italy	8.0
13	Japan	7.8
14	Switzerland	7.8
15	Czech Republic	7.8

# Final Score: Luxembourg and Vienna at #1, Madrid #2, Toronto and Paris #3

#	City	Country	Final Score	Contribution to Final Score		2 <sup>nd</sup> Passport legal	English is enough	Residence to Citizenship
			Contribution	50%	50%	<span style="color: green;">■</span> Preferences <span style="color: lightgreen;">■</span> Political Values		
1	Vienna	Austria	8.0	38%	62%			10
2	Luxembourg	Luxembourg	8.0	41%	59%	✓		5
3	Madrid	Spain	7.9	39%	61%			10
4	Toronto	Canada	7.7	40%	60%	✓	✓	3
5	Paris	France	7.7	36%	64%	✓		5
6	Montreal	Canada	7.4	37%	63%	✓		3
7	New York	USA	7.3	33%	67%	✓	✓	5
8	Seattle	USA	7.3	33%	67%	✓	✓	5
9	Miami	USA	7.2	33%	67%	✓	✓	5
10	Chicago	USA	7.2	32%	68%	✓	✓	5
11	Boston	USA	7.1	32%	68%	✓	✓	5
12	Tokyo	Japan	7.1	45%	55%			5
13	San Francisco	USA	7.1	31%	69%	✓	✓	5
14	Frankfurt	Germany	7.1	41%	59%	✓		3
15	Barcelona	Spain	7.0	31%	69%			10

<sup>1</sup> All indicators are rated on a scale from 0 to 10, where 10 represents the best value. The closer the final score is to 10, the better the city aligns with the client's preferences.



# Cities Shortlist

Snapshots of the cities and countries you have chosen to your shortlist

# Dubai: a Metropolis Mirage at the Crossroads of Three Continents

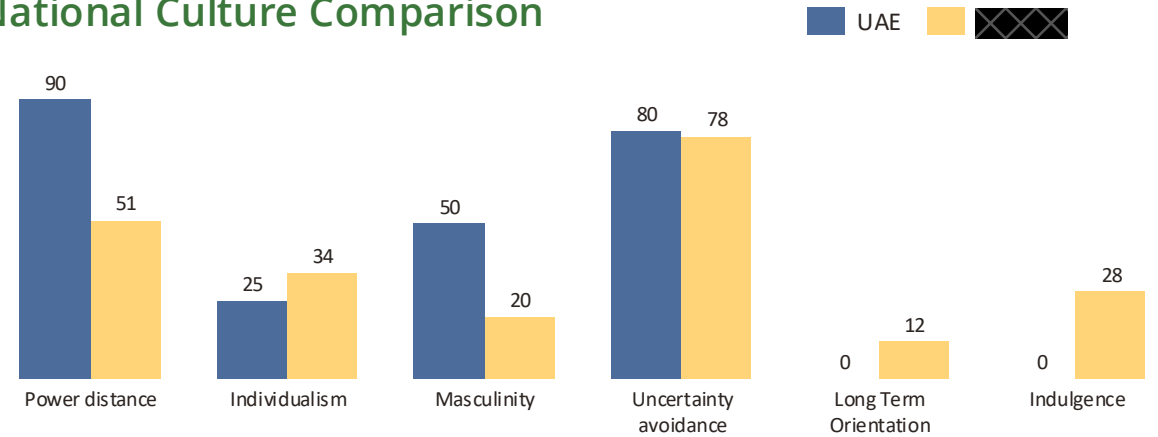


Mirror-clad towers rise from the desert, their gleaming facades reflecting the relentless sun. Dubai — a city born from sheer human determination defying nature itself. Beneath the glossy veneer of futuristic skyscrapers lies a pragmatic business hub where financial streams from East and West converge with minimal tax friction. Morning coffee overlooking the Persian Gulf can be followed by lunch in the sky, enroute to Hong Kong or London.

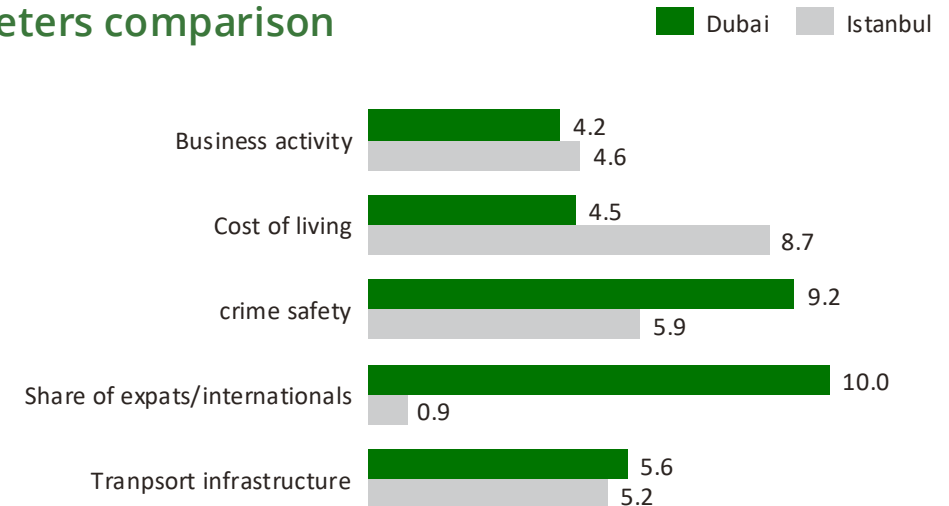


During summer months, life flows through air-conditioned arteries connecting chilled spaces. Winter evenings see rare pedestrian districts come alive as voices fill the cooler air. Expatriates orbit in spheres of luxury, rarely intersecting with the army of migrant workers. The small native Emirati population maintains their traditions in closed communities, living in the shadows of glass towers. Air conditioners run ceaselessly, consuming gigawatts of electricity. They create an artificial oasis of comfort regardless of environmental cost—an apt metaphor for a city where triumph of ambition over nature is as impressive as it is precarious.

## National Culture Comparison



## Parameters comparison



# Comparing your personal political values to those of United Arab Emirates



**Important Child Qualities** reflects which traits respondents noted as important in raising children. There were a total of 4 options, two religious and two fostering independence. Accordingly, each religious option adds -1 to the score, while each "free" option adds +1. The graph shows the distribution of respondents by the sum of scores.

**Materialistic and Postmaterialistic values** was built based on the selection of two most important aspects out of 4:

- Maintaining order in the country
- Giving people more say in important government decisions
- Fighting rising prices
- Protecting freedom of speech

# Toronto: Where Film Sets and Financial Districts Converge

Autumn leaves carpet ravines that slice through Toronto's grid, creating secret wilderness corridors where urbanites escape concrete and glass. The city pulses with conversations in over 200 languages, neighborhood festivals spilling from Greektown to Little Jamaica, while financial towers house the quiet engine of Canada's economy.

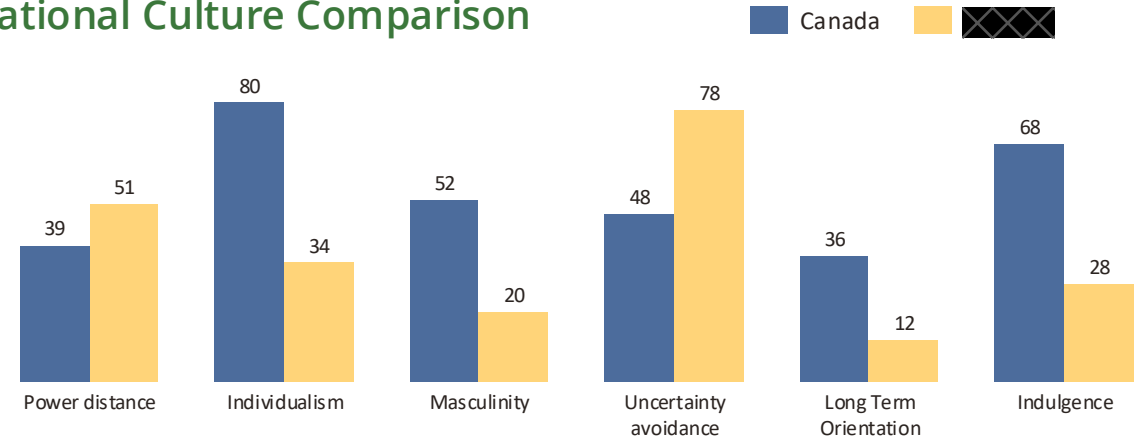
University lecture halls buzz with international students drawn to world-class research institutions, their presence fueling tech startups in repurposed warehouses along the waterfront. Locals navigate between Victorian homes and modernist skyscrapers, complaining about real estate prices over craft beers and globally-inspired street food.



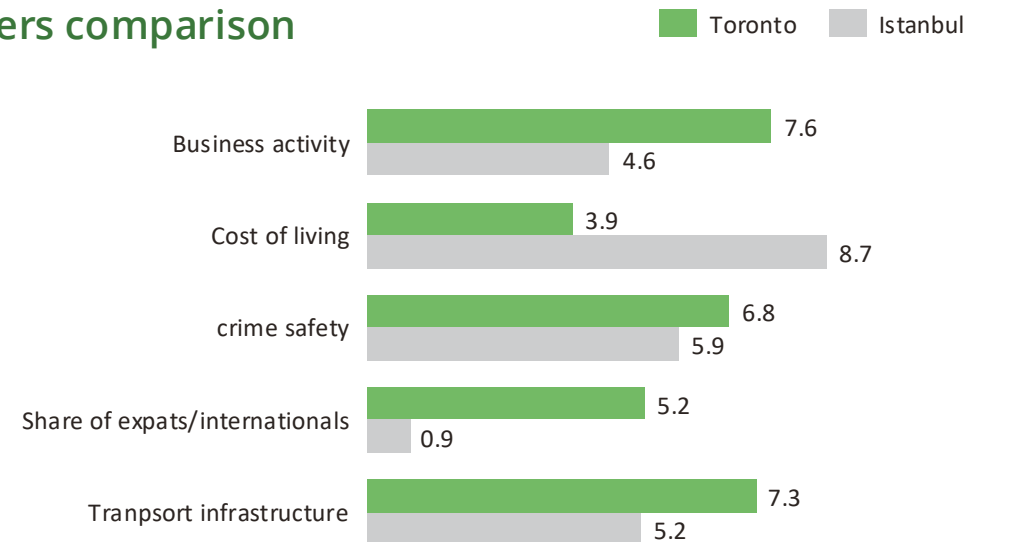
Winter transforms the city into a network of underground pathways as residents retreat from sub-zero temperatures. Housing costs force young professionals into increasingly distant suburbs, creating daily traffic battles that contrast with the city's progressive reputation.

Yet Toronto's contradictions define its character - a place where banking conservatism meets creative experimentation, where orderly streets hide immigrant entrepreneurial energy, and where a veneer of Canadian politeness masks intensely competitive ambition. The city's strength lies in managing these tensions while continuing to accommodate new arrivals seeking their version of the Toronto dream.

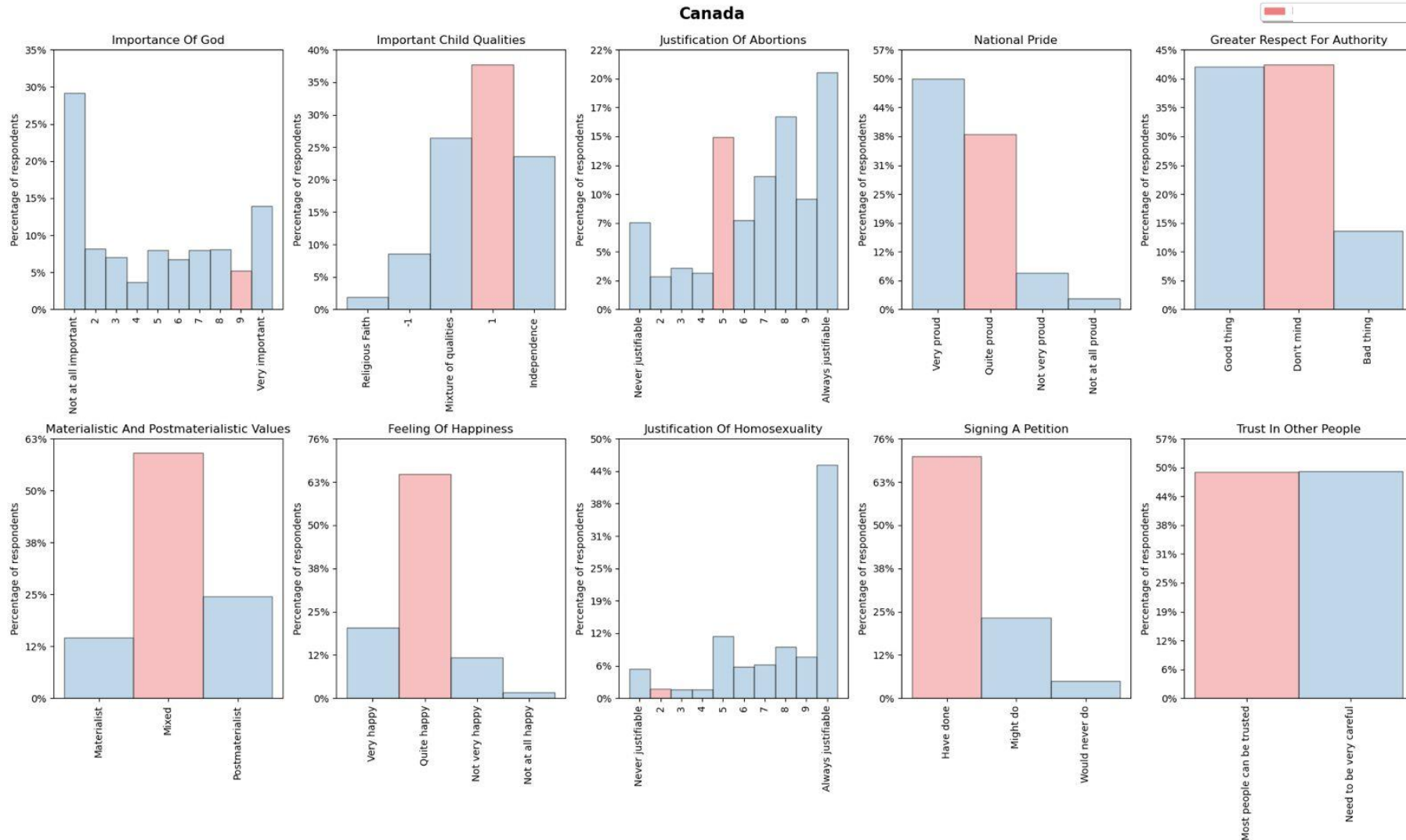
## National Culture Comparison



## Parameters comparison



# Comparing your personal political values to those of Canada



**Important Child Qualities** reflects which traits respondents noted as important in raising children. There were a total of 4 options, two religious and two fostering independence. Accordingly, each religious option adds -1 to the score, while each "free" option adds +1. The graph shows the distribution of respondents by the sum of scores.

**Materialistic and Postmaterialistic values** was built based on the selection of two most important aspects out of 4:

- Maintaining order in the country
- Giving people more say in important government decisions
- Fighting rising prices
- Protecting freedom of speech

# Riyadh: Glass Mirage on Oil Sands

Desert winds of change are rewriting Riyadh's silhouette, transforming it from an oil capital into an ambitious metropolis of the future. The city, which grew amidst the Arabian desert, now rises with glass skyscrapers of the Financial District and luxurious shopping malls.

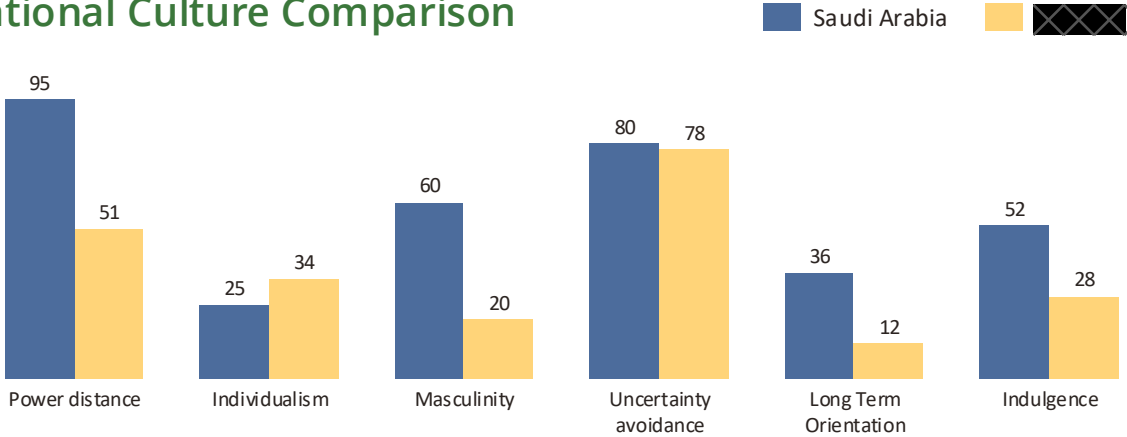
Under the scorching sun (reaching 45°C in summer), a massive transformation unfolds – Saudi Arabia's Vision 2030 program is changing not only the urban landscape but society itself. Women driving, concerts by global stars, and newly opened cinemas were unimaginable just five years ago.

Unlike neighboring Dubai, which has proven its development model viable, the Saudi experiment is just gaining momentum. Grand projects require not only petrodollars but profound sociocultural changes that cannot be accelerated even by royal decrees.

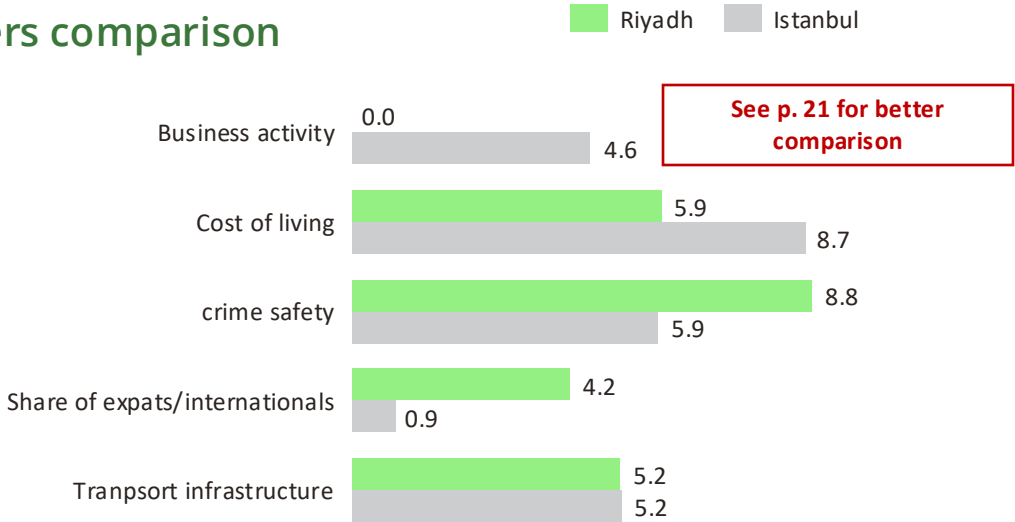
Riyadh fascinates with its duality – ultra-modern business centers stand alongside tiny shops in old markets, where merchants still offer cardamom coffee and fresh dates. Time will tell whether this ambitious startup in the desert becomes a new global center or remains a costly mirage.



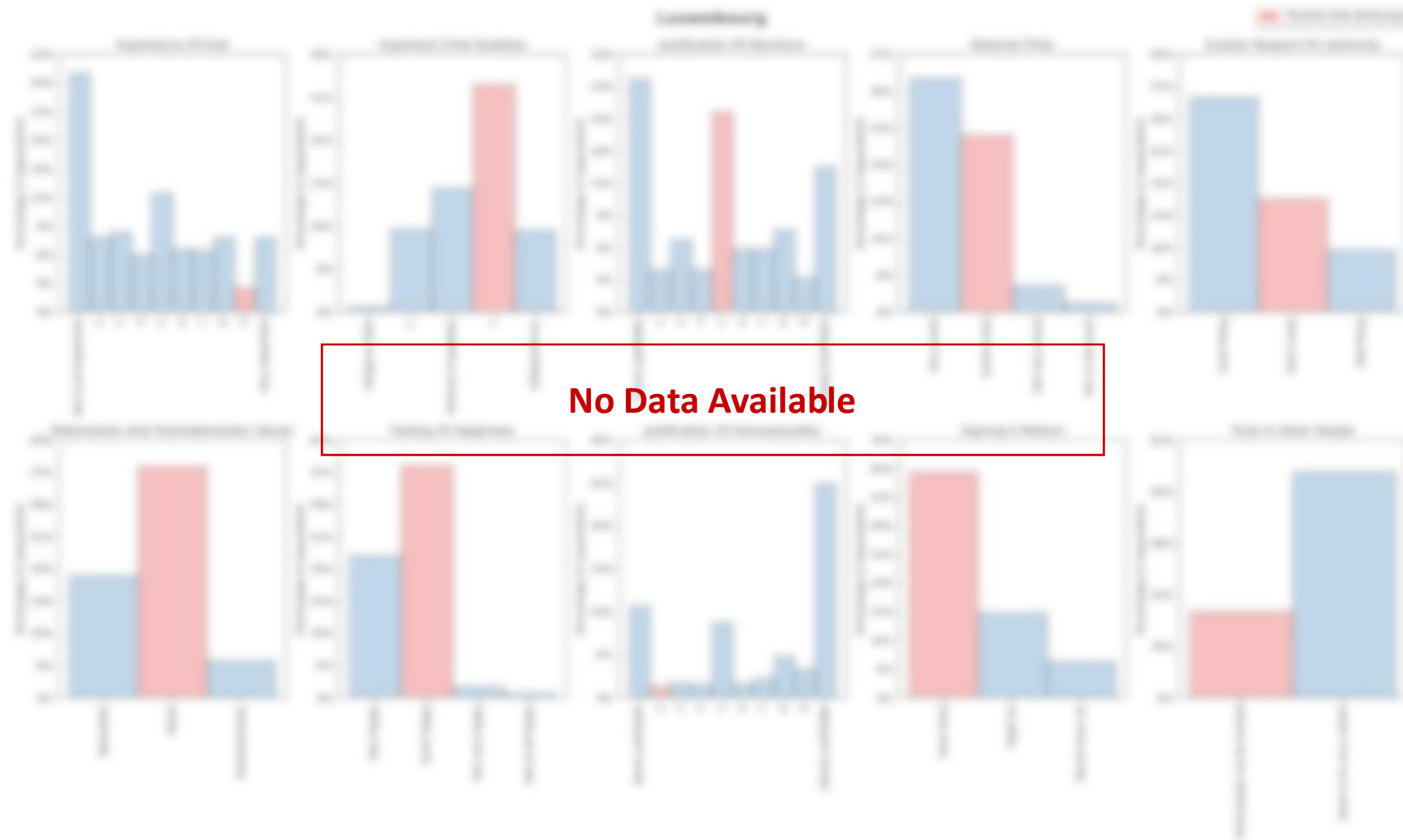
## National Culture Comparison



## Parameters comparison



# Comparing your personal political values to those of Saudi Arabia



**Important Child Qualities** reflects which traits respondents noted as important in raising children. There were a total of 4 options, two religious and two fostering independence. Accordingly, each religious option adds -1 to the score, while each "free" option adds +1. The graph shows the distribution of respondents by the sum of scores.

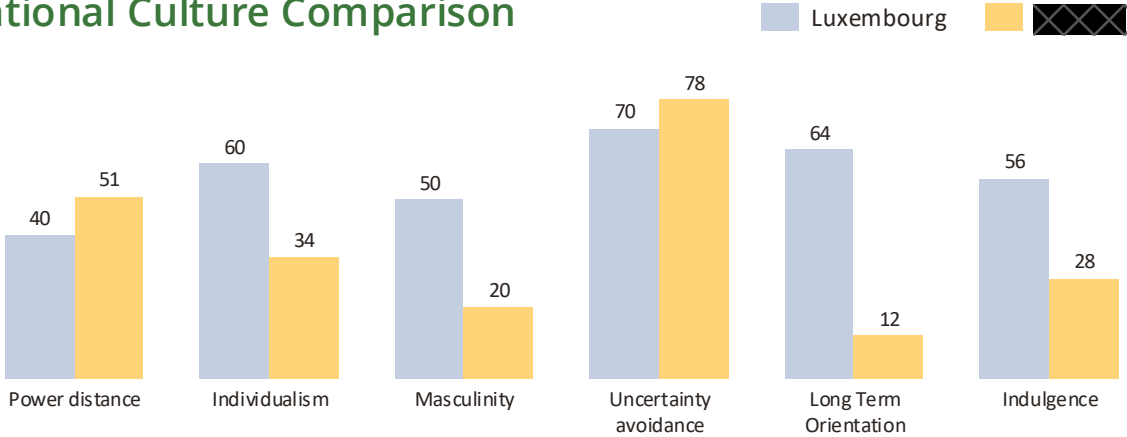
**Materialistic and Postmaterialistic values** was built based on the selection of two most important aspects out of 4:

- Maintaining order in the country
- Giving people more say in important government decisions
- Fighting rising prices
- Protecting freedom of speech

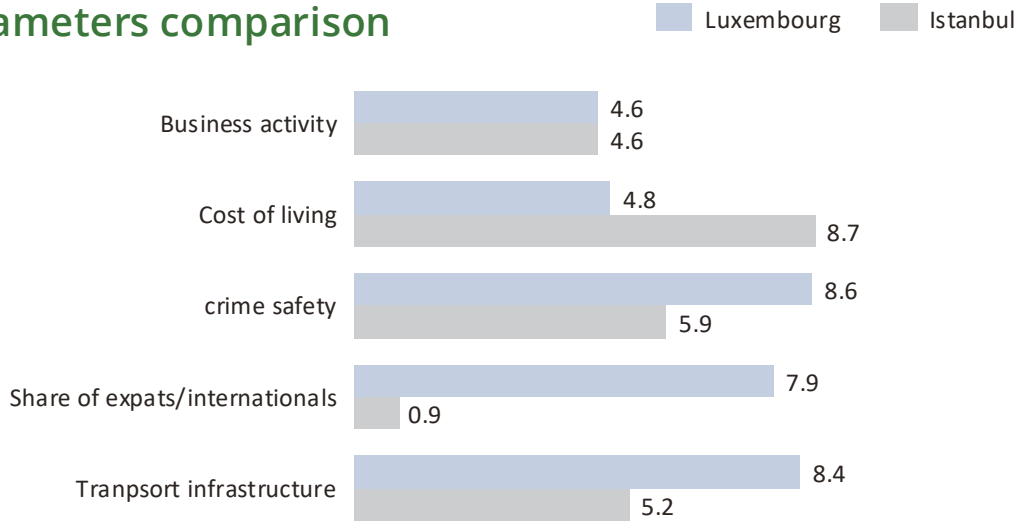
# Luxembourg: microstate, macro influence



## National Culture Comparison



## Parameters comparison

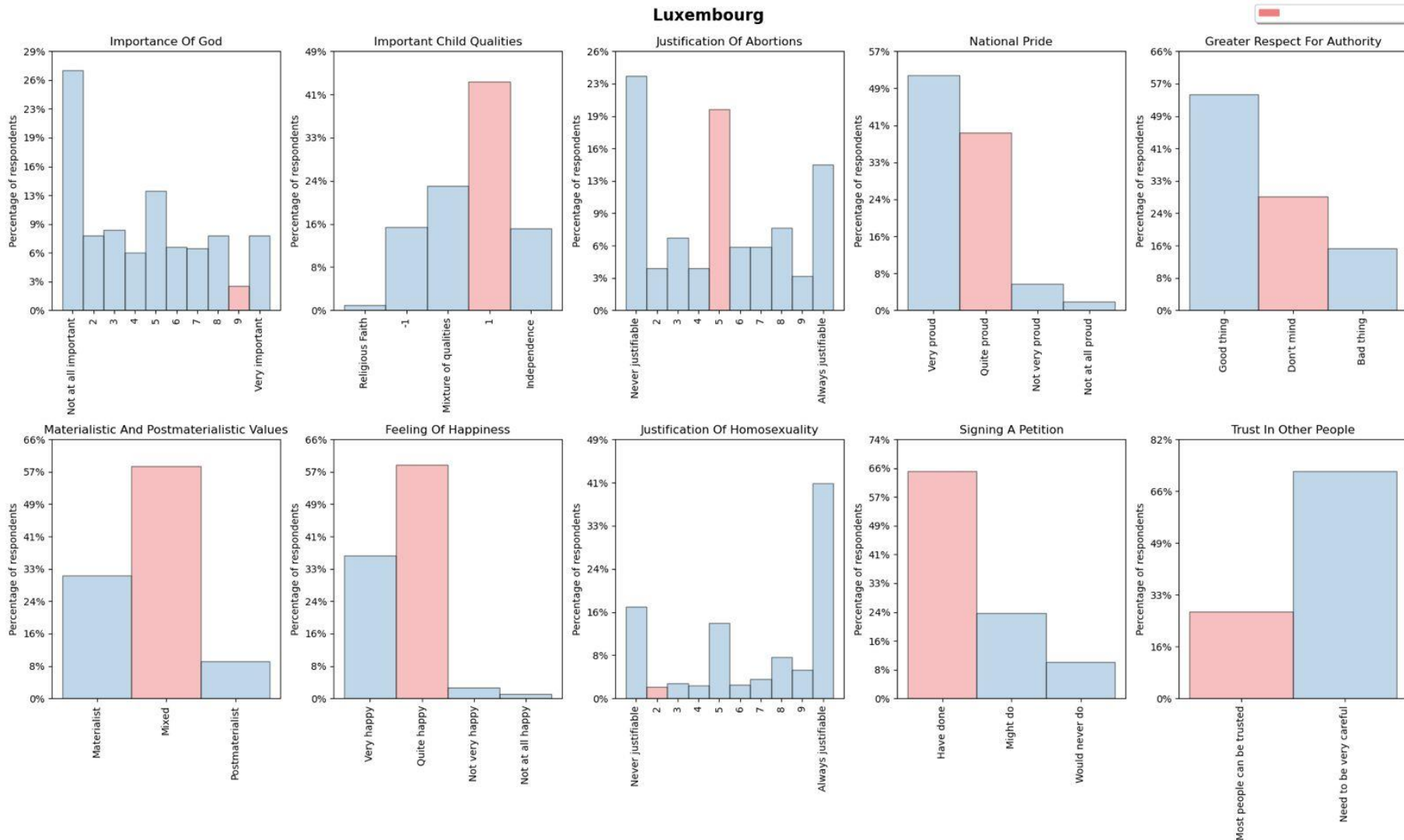


Walking through the ancient streets of Luxembourg, where every stone recalls Europe's history, this small capital harbors outsized ambitions. Banking towers stand shoulder to shoulder with 17th-century fortress walls, while café conversations blend German, French, and Luxembourgish, inevitably sprinkled with English.

The city attracts financiers and EU officials but tests their patience with housing prices. Morning traffic jams of 220,000 cross-border workers contrast sharply with free public transportation. Locals value safety and stability, yet for vibrant cultural experiences, they're willing to take a two-hour train ride to Paris.

Behind its reserved façade lies a remarkable city-state where government decisions are implemented with German precision, holidays celebrated with French elegance, and national pride maintained with Luxembourgish tenacity. The perfect place for those who appreciate intimacy but think globally.

# Comparing your personal political values to those of Luxembourg



**Important Child Qualities** reflects which traits respondents noted as important in raising children. There were a total of 4 options, two religious and two fostering independence. Accordingly, each religious option adds -1 to the score, while each "free" option adds +1. The graph shows the distribution of respondents by the sum of scores.

**Materialistic and Postmaterialistic values** was built based on the selection of two most important aspects out of 4:

- Maintaining order in the country
- Giving people more say in important government decisions
- Fighting rising prices
- Protecting freedom of speech

# Amsterdam: Sanctuary for Free Thinkers and Entrepreneurs from Around the World

Golden Age canals reflect sleek glass offices as Amsterdam weaves its historical tapestry into present day. Ancient façades stand shoulder to shoulder with modern architecture, established corporations share neighborhoods with startups, and pulsating nightlife exists harmoniously alongside world-class museums, creating a cultural landscape unlike any other.

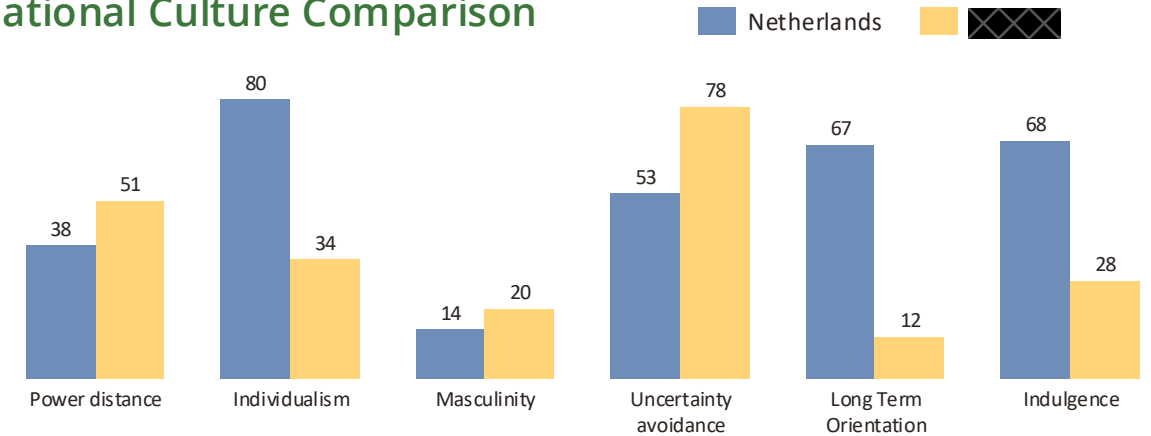
Amsterdam's calling card – its spirit of freedom and acceptance – continues to draw creative minds and innovators globally. The city's extensive network of bicycle paths and eco-friendly public transport have become integral to daily life.

Daily existence here unfolds in small pleasures: morning coffee at a cozy café or evening strolls along the Jordaan canals, absorbing the tranquility of waterways and the vitality of local boutiques. Amsterdam inspires and nurtures both personal and professional growth.

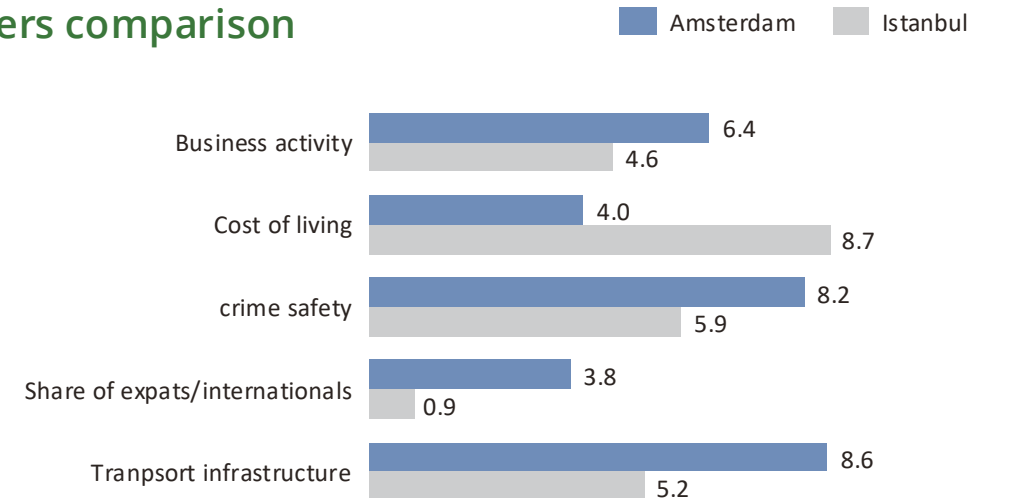
Prospective residents should note the high housing costs and shortage, particularly in central districts. Language barriers rarely pose problems as most Amsterdammers speak fluent English. Public transport can be crowded during rush hours – a minor inconvenience compared to the wealth of opportunities this remarkable city offers.



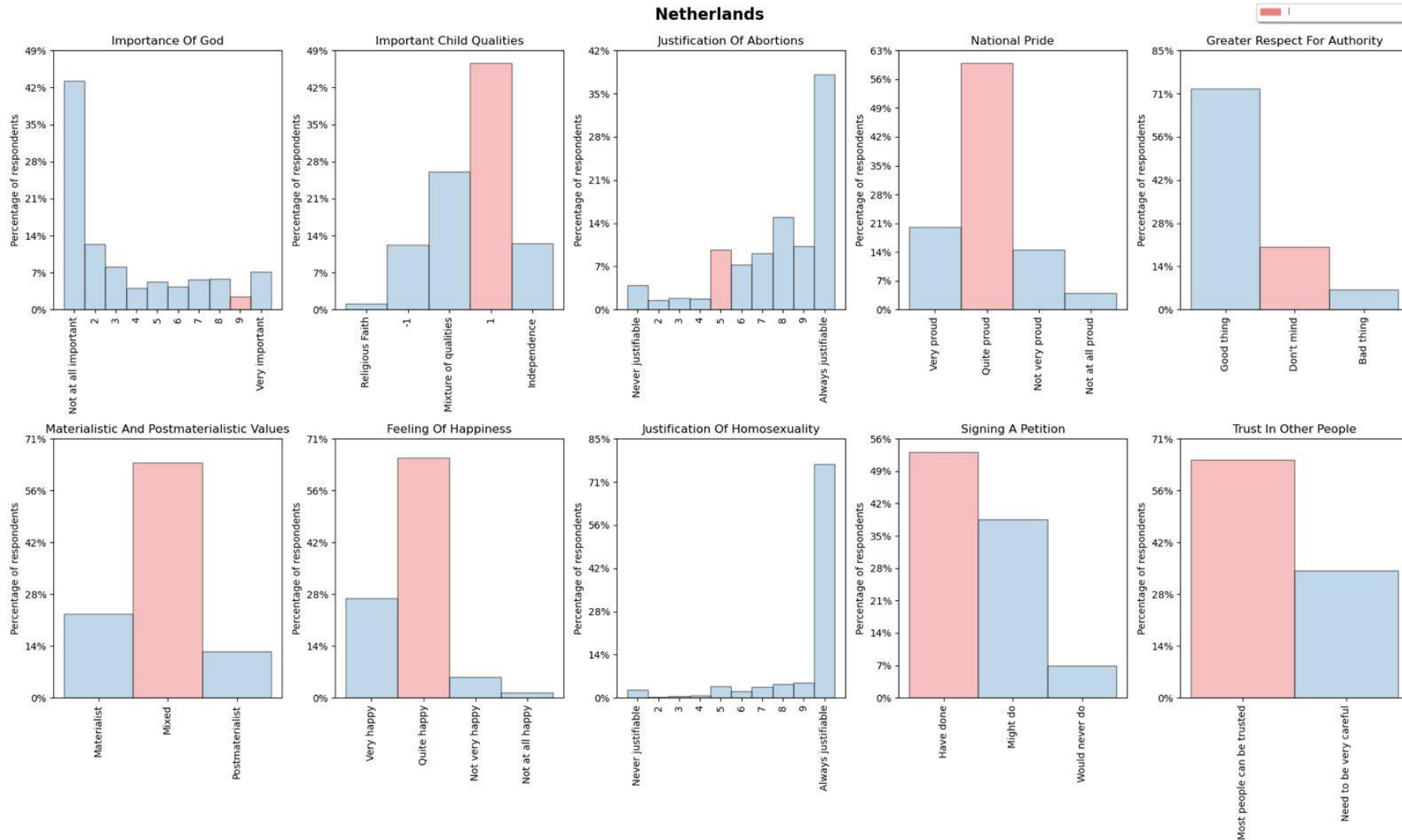
## National Culture Comparison



## Parameters comparison



# Comparing your personal political values to those of the Netherlands

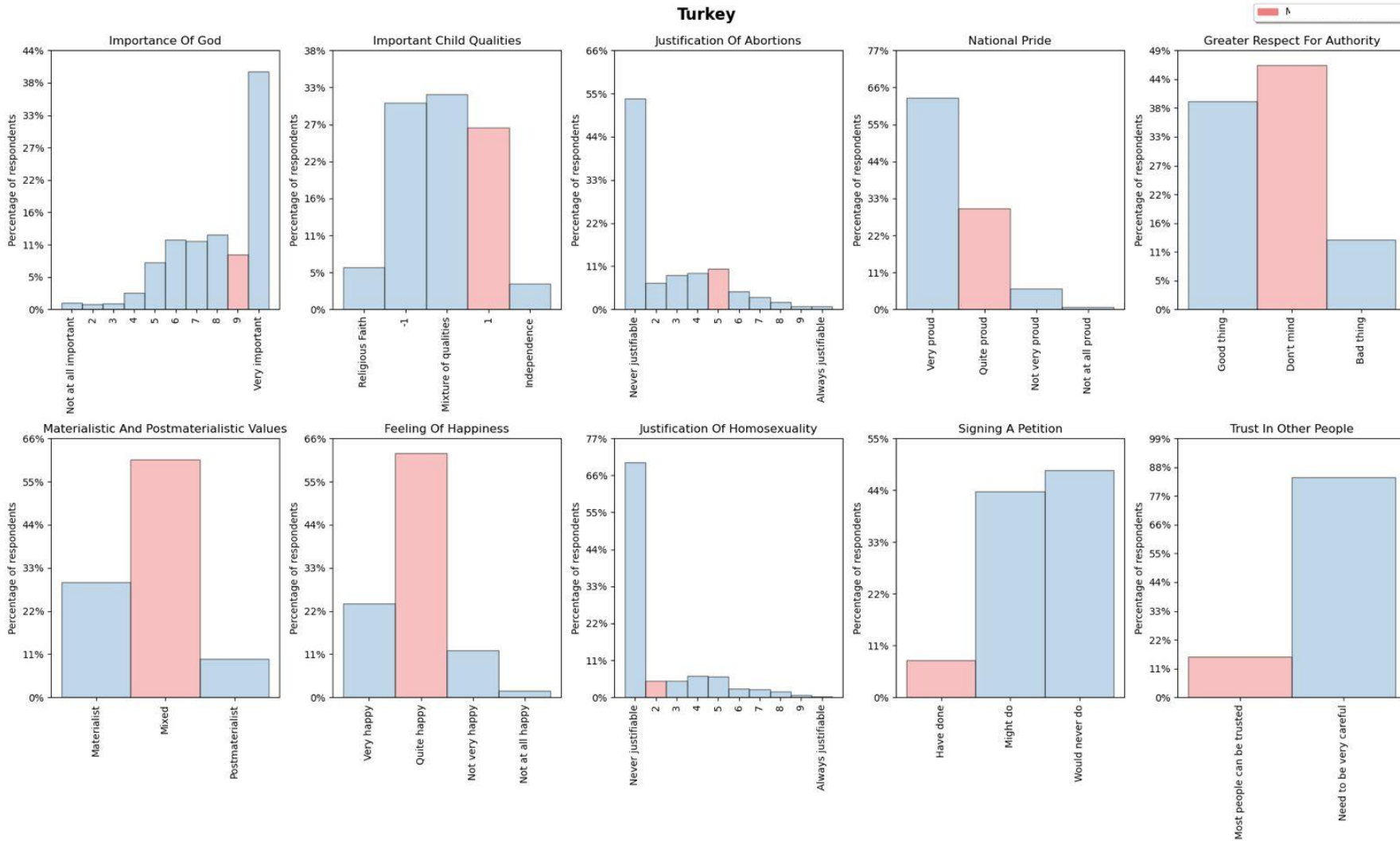


**Important Child Qualities** reflects which traits respondents noted as important in raising children. There were a total of 4 options, two religious and two fostering independence. Accordingly, each religious option adds -1 to the score, while each "free" option adds +1. The graph shows the distribution of respondents by the sum of scores.

**Materialistic and Postmaterialistic values** was built based on the selection of two most important aspects out of 4:

- Maintaining order in the country
- Giving people more say in important government decisions
- Fighting rising prices
- Protecting freedom of speech

# Comparing your personal political values to those of Turkey

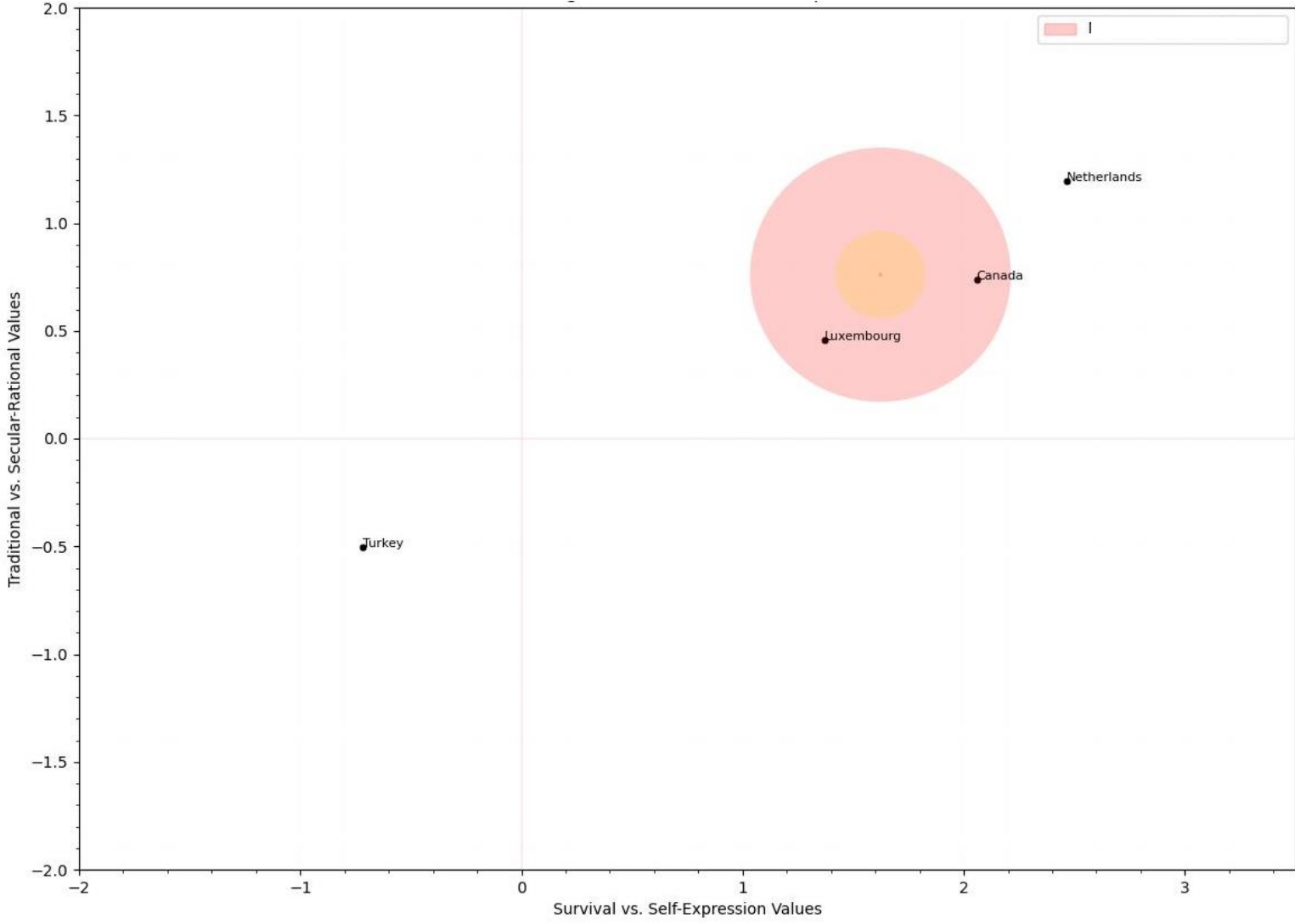


**Important Child Qualities** reflects which traits respondents noted as important in raising children. There were a total of 4 options, two religious and two fostering independence. Accordingly, each religious option adds -1 to the score, while each "free" option adds +1. The graph shows the distribution of respondents by the sum of scores.

**Materialistic and Postmaterialistic values** was built based on the selection of two most important aspects out of 4:

- Maintaining order in the country
- Giving people more say in important government decisions
- Fighting rising prices
- Protecting freedom of speech

# How your shortlisted countries compare to your political values profile

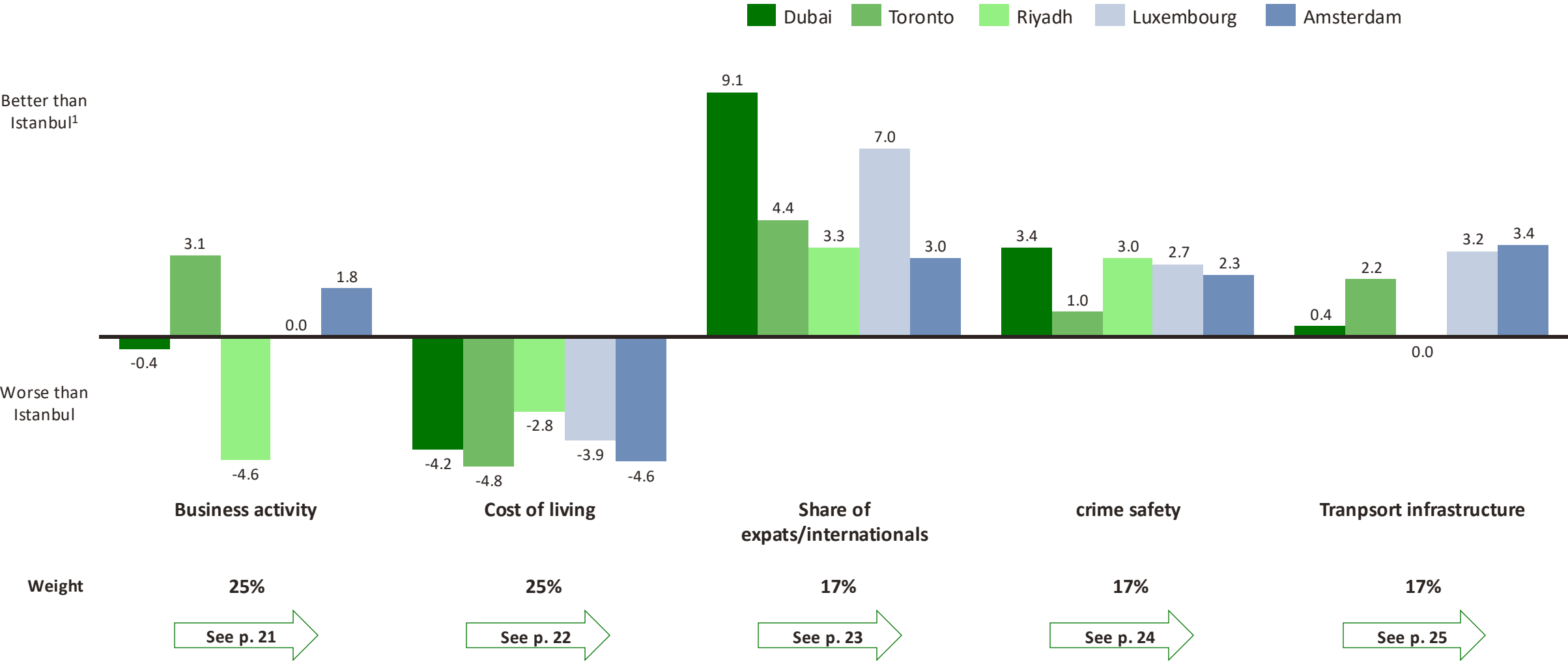




# Cities Shortlist: In-depth comparison

Detailed comparisons of the shortlisted cities by your chosen parameters

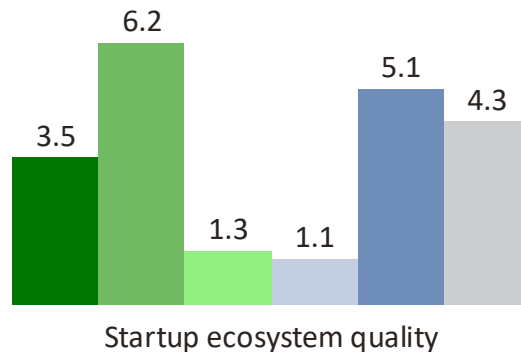
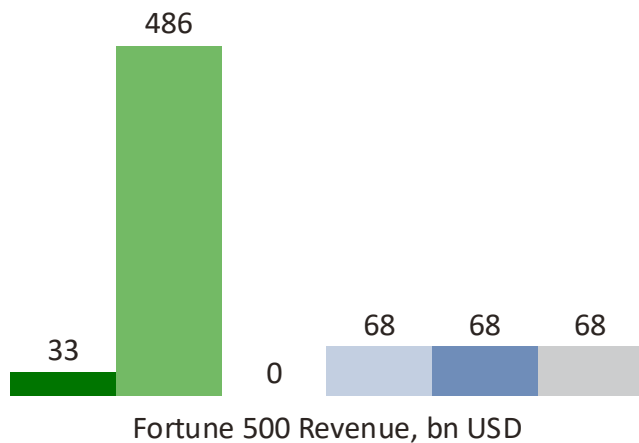
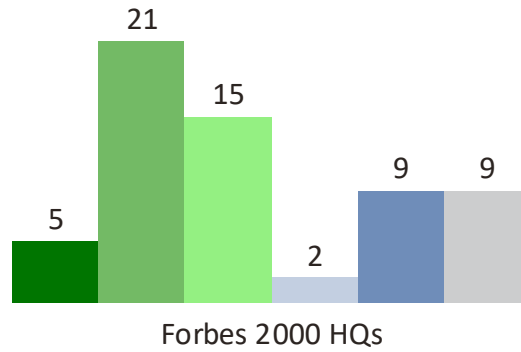
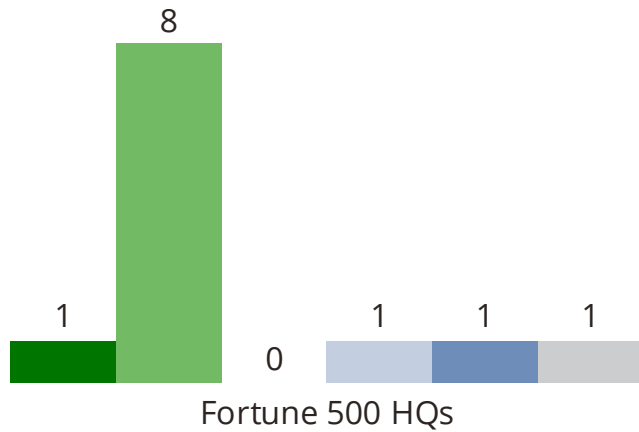
# Shortlisted cities compared against your base city: Istanbul



1 The graph shows the deviation of key parameters for the top 3 cities from the values of the base city. A deviation of +5 means that the city under consideration is better than the base city by 5 points out of 10, while -5 means that it lags behind the base city by 5 points.

# Toronto hosts most big corps of Shortlist cities; Riyadh is up and coming

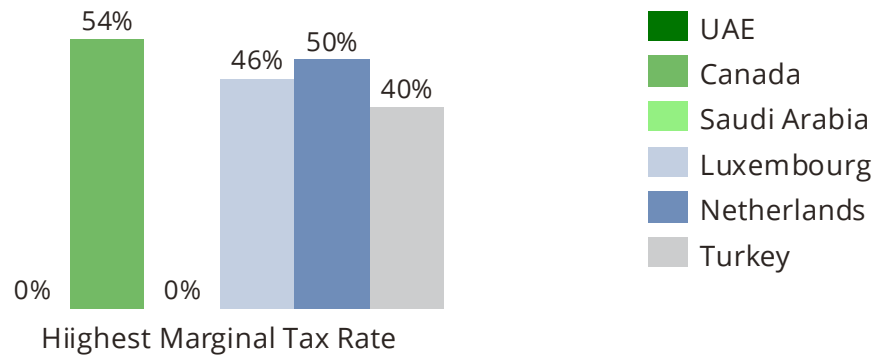
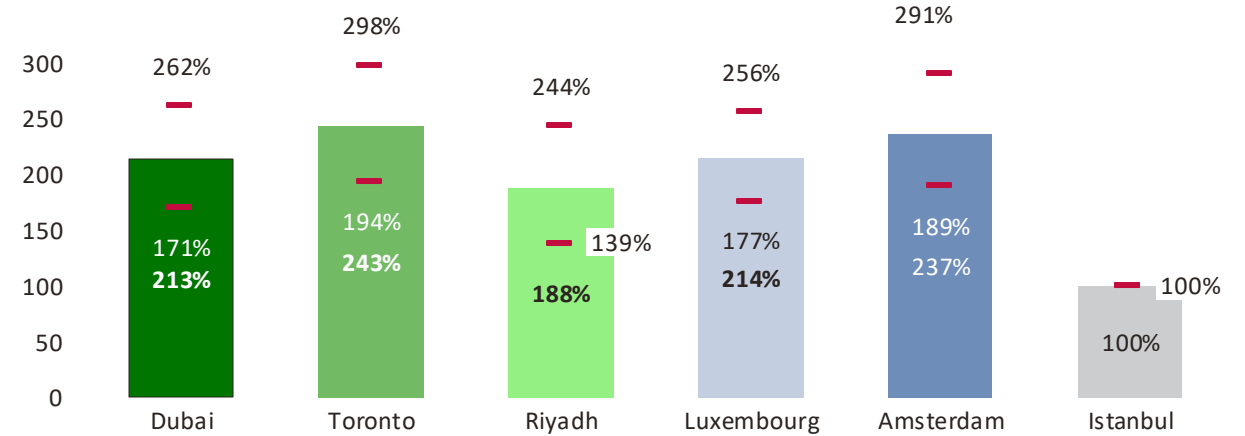
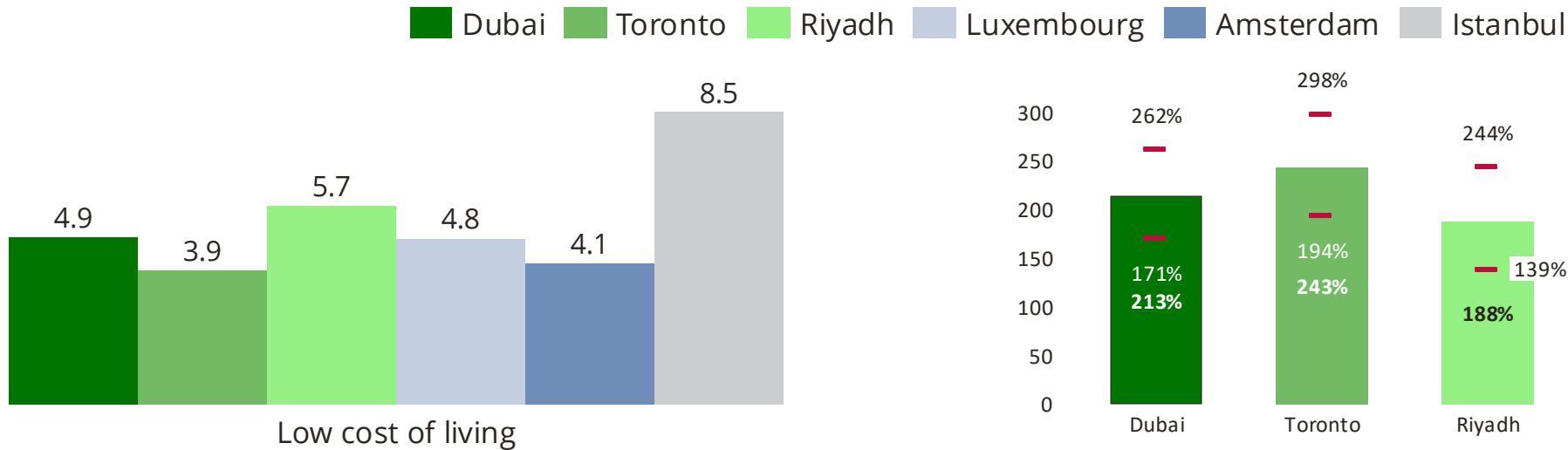
■ Dubai 
 ■ Toronto 
 ■ Riyadh 
 ■ Luxembourg 
 ■ Amsterdam 
 ■ Istanbul



**Global Fortune 500** lists largest companies globally by revenue (includes public and private)  
**Forbes Global 2000** lists largest publicly traded companies

Forbes Global 2000 is the latest addition to our model, hence **it was not accounted for in the original rankings**

# All shortlisted cities are at least x2.5 more costly than Istanbul, Riyadh is less pricey



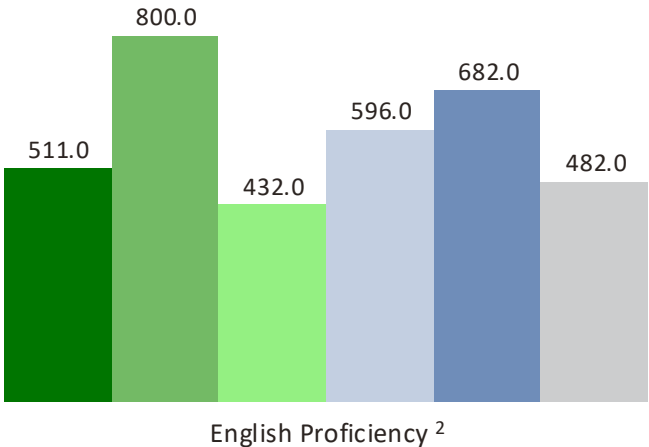
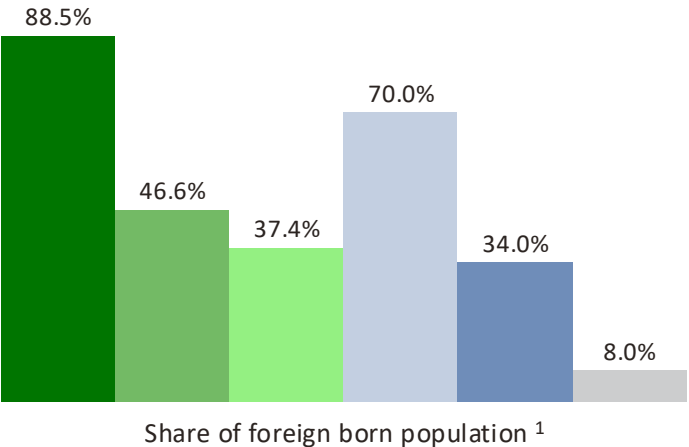
The **Greener Affordability Index** converts the values of the Greener Cost of Living Index into a 10-point scale relative to other cities in the sample, where a value of 10 is assigned to the most affordable city, and 0 to the most expensive city.

The **Cost of Living Index** shows an averaged assessment of the cost of living index from several sources. This helps compensate for distortions in the evaluation of each source related to the composition of the basket and the sources of retail prices for various items. All indices take into account the cost of real estate rental.

For better clarity, the cost of living index is presented as a percentage of the base city, which allows you to assess how much more expensive/cheaper life is in the selected city compared to the base city.

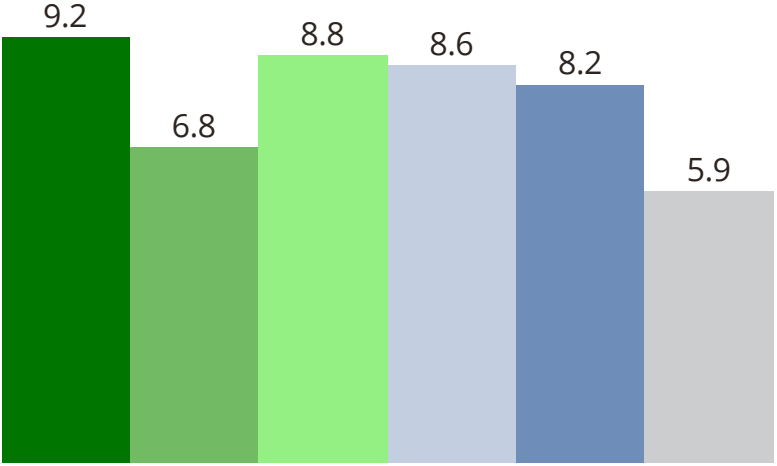
# Biggest share of foreign-born in Dubai, #2 Luxembourg, Riyadh still below Toronto

Dubai Toronto Riyadh Luxembourg Amsterdam Istanbul

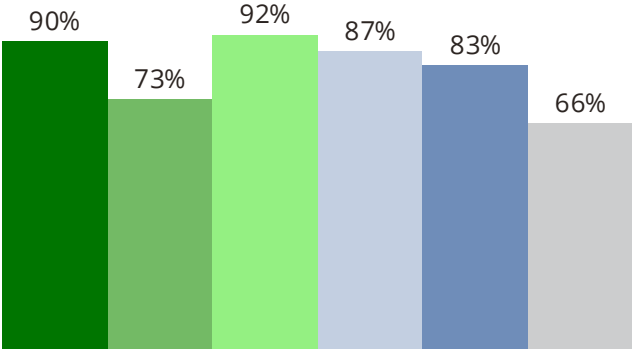


# Dubai is considered safest, Riyadh and Luxembourg coming close #2 and #3

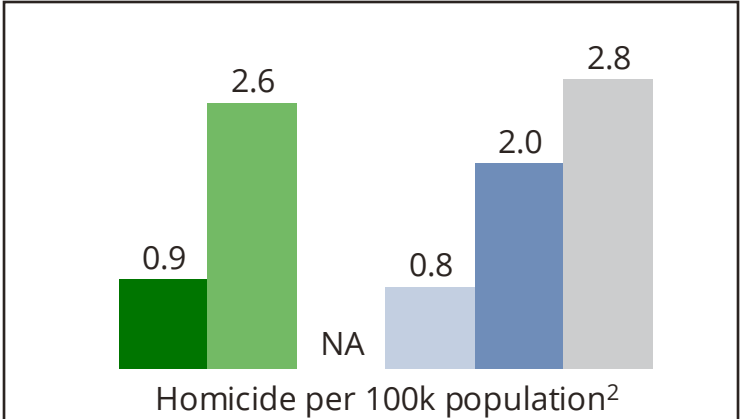
■ Dubai 
 ■ Toronto 
 ■ Riyadh 
 ■ Luxembourg 
 ■ Amsterdam 
 ■ Istanbul



Crime Safety Perception<sup>1</sup>

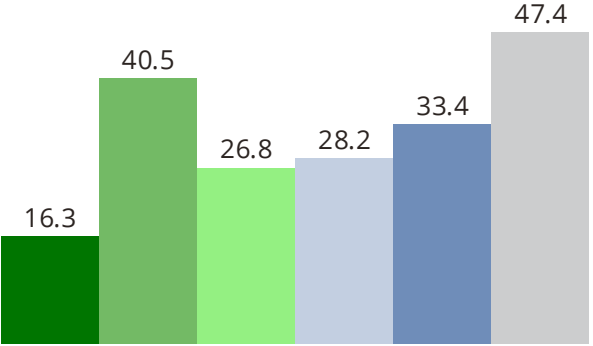


Gallup: % who feel safe walking alone at night

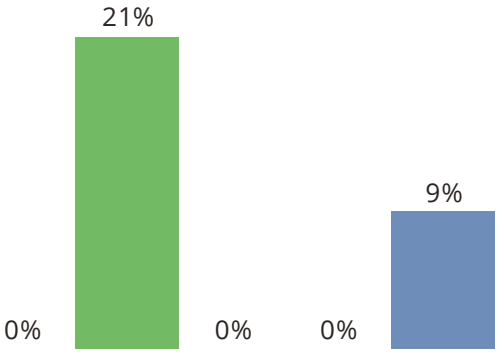


Homicide per 100k population<sup>2</sup>

The only type of crime for which some statistics on actual crime rates most of these cities is available is homicide. It is important to notice that, given free speech limitations and censorship, Dubai numbers may be underreported, with incidents involving more vulnerable social groups possibly going under the radar.



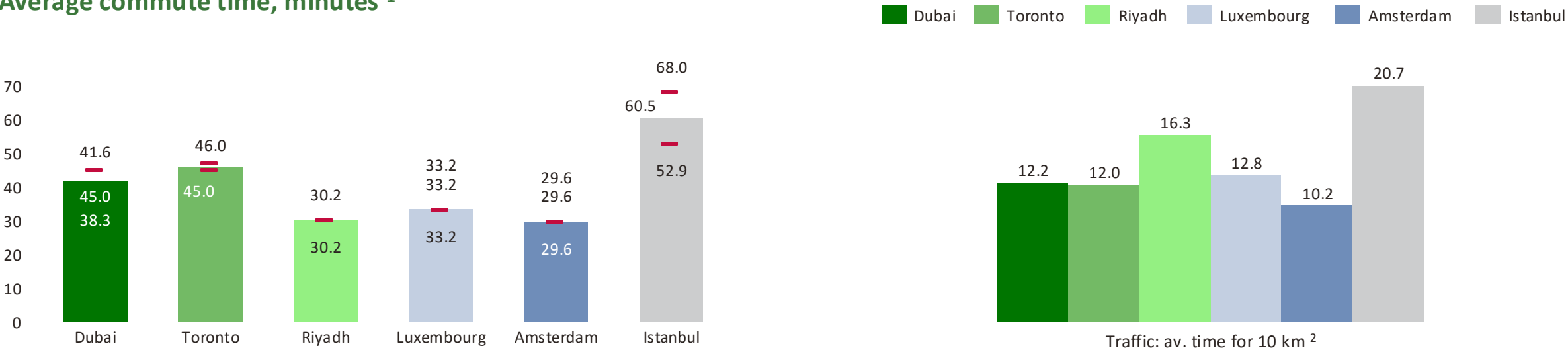
Crime perception



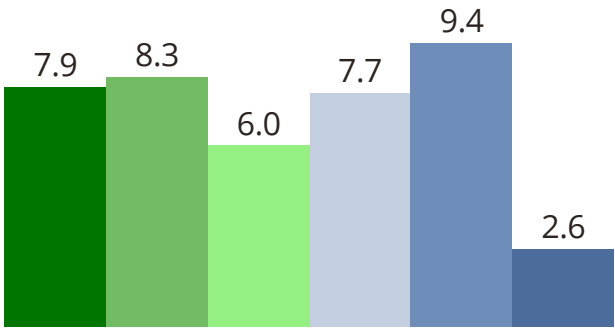
Share of respondents: victims or their relatives

# Best transport system in Amsterdam, drive times comparable in Dubai, Toronto, LUX

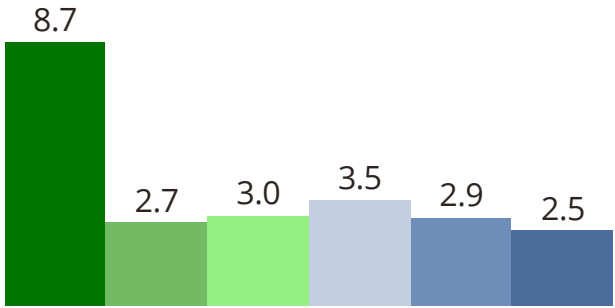
Average commute time, minutes <sup>1</sup>



# Best public education in the Netherlands, Dubai #1 in IB, Riyadh – Cambridge schools

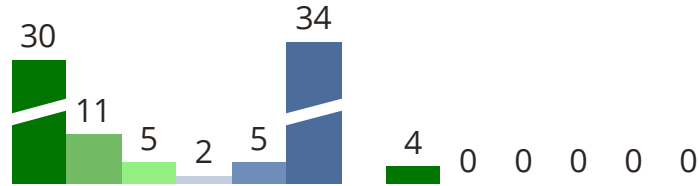


Greener | Public Education Quality



Greener | Private schools (city)

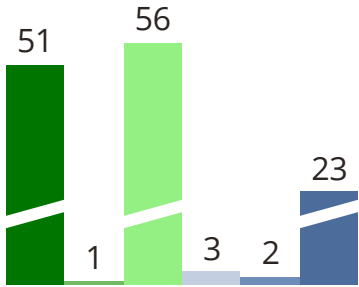
## Number of private schools by program



# of IB schools in a city<sup>3</sup>

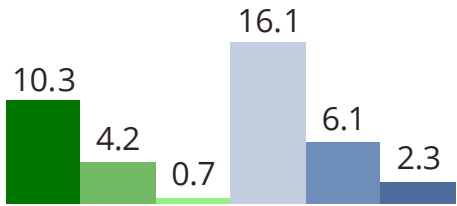


# of top IB schools in the city

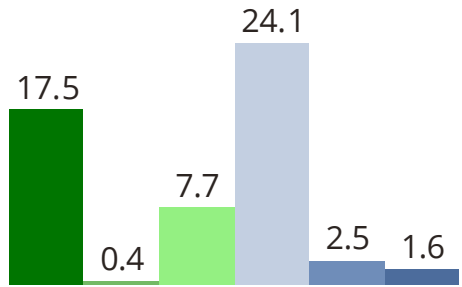


Cambridge schools in a city<sup>3</sup>

## Number of private schools per 1 mln inhabitants



IB schools per 1 mln population (city)

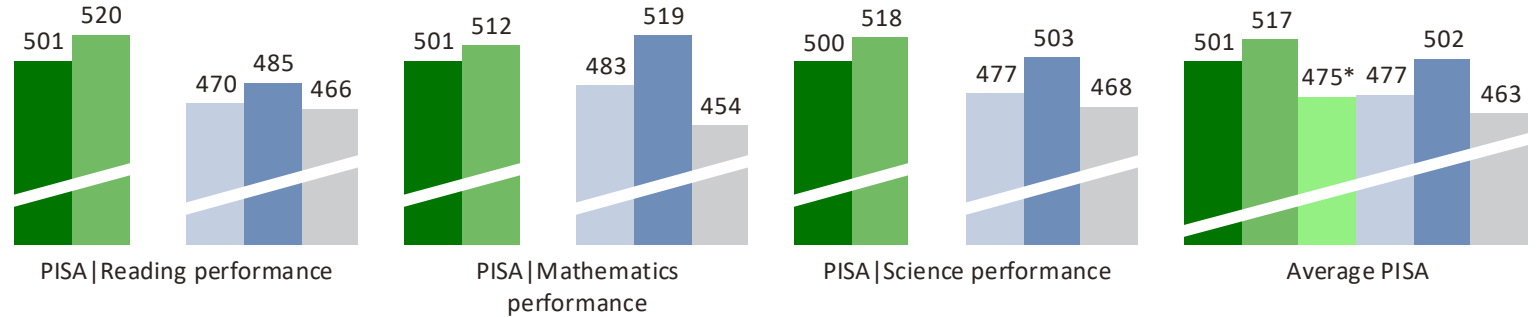
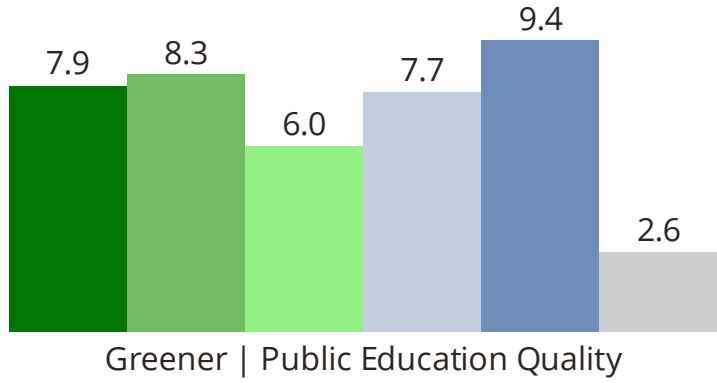


Cambridge schools per 1 mln population (city)

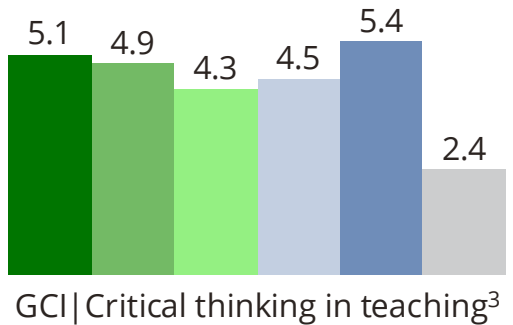
# Canada shows highest PISA score, but NL boasts better skills at graduation

■ UAE 
 ■ Canada 
 ■ Saudi Arabia 
 ■ Luxembourg 
 ■ Netherlands 
 ■ Turkey

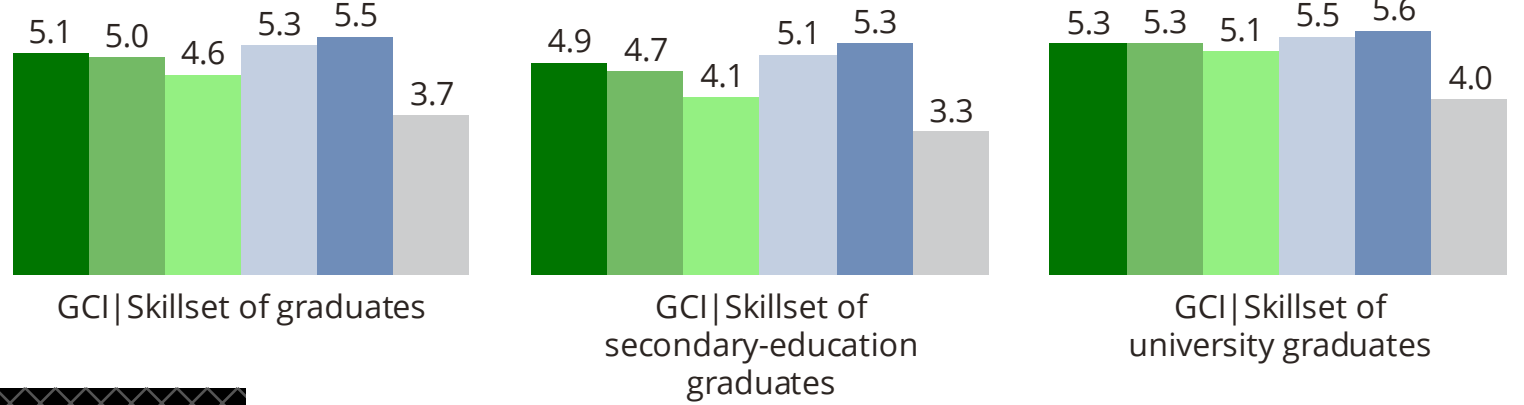
Average scores of school pupils by subjects (PISA)<sup>2</sup>



Critical thinking (max score 6)<sup>3</sup>



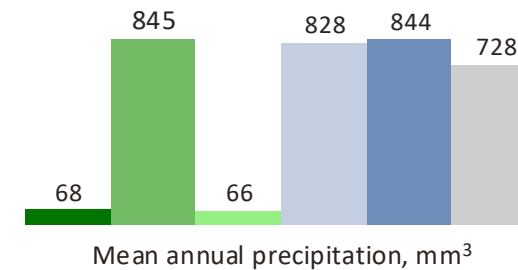
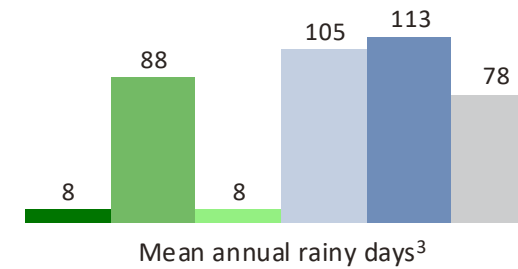
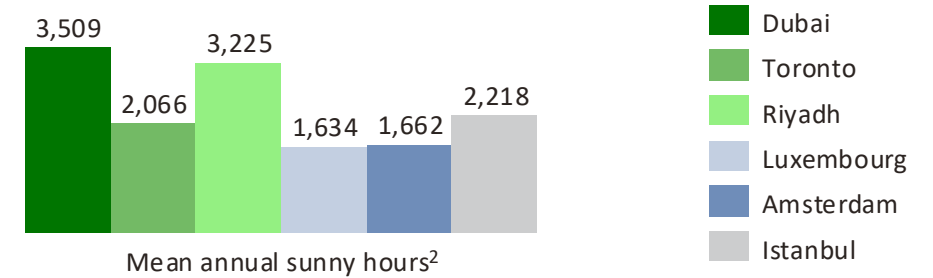
Skillsets of fresh graduates (max score 6)<sup>3</sup>



\* Rough Estimate, no PISA scores reported

# Dubai and Riyadh the sunniest, Lux and Amsterdam are somewhat gloomy

City	Climate type	Description
<b>Dubai</b>	Hot desert	Hot, arid conditions, sunny and dry year-round
<b>Toronto</b>	Hot-summer humid continental	Dry season, hot summer, cold winter, warmest month is usually July/August, no significant precipitation difference between seasons
<b>Riyadh</b>	Hot desert	Hot, arid conditions, sunny and dry year-round
<b>Luxembourg</b>	Temperate oceanic	Mild summers, cool winters, relatively narrow annual temperature range, reliable and constant precipitation throughout the entire year
<b>Amsterdam</b>	Temperate oceanic	Mild summers, cool winters, relatively narrow annual temperature range, reliable and constant precipitation throughout the entire year
<b>Istanbul</b>	Hot-summer Mediterranean	Hot, sometimes very hot and dry summers, mild and wet winters



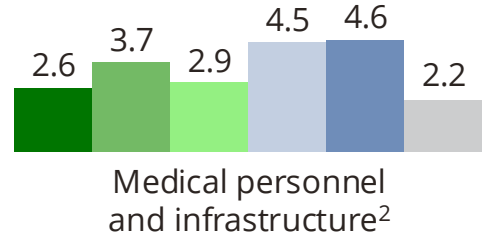
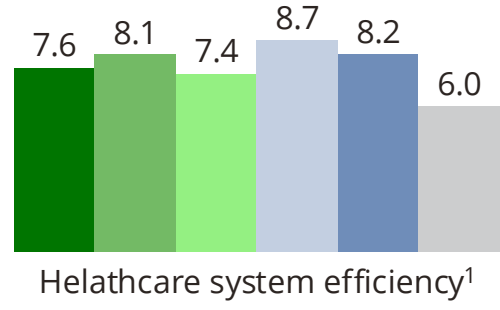
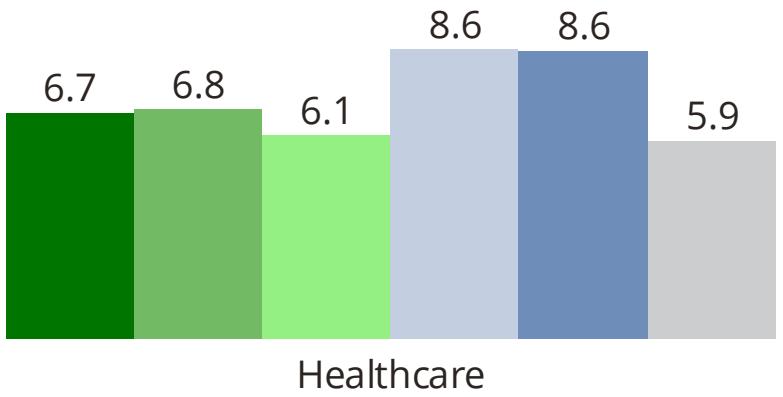
# Riyadh is even hotter than Dubai, Toronto boasts cold winters and hot summers

Monthly Mean Temperatures<sup>1</sup>



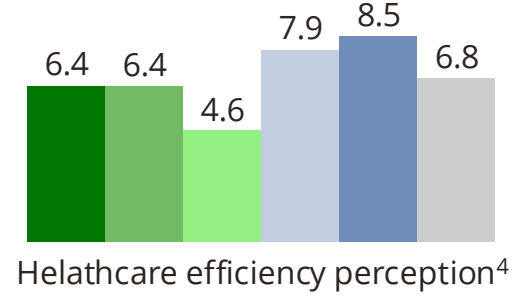
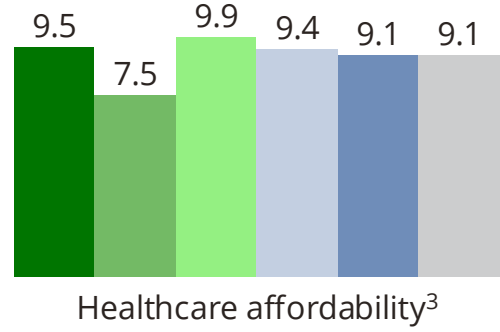
# Healthcare: Lux and NL are the leaders, efficiency-wise Lux #1, Canada and NL #2

■ UAE 
 ■ Canada 
 ■ Saudi Arabia 
 ■ Luxembourg 
 ■ Netherlands 
 ■ Turkey



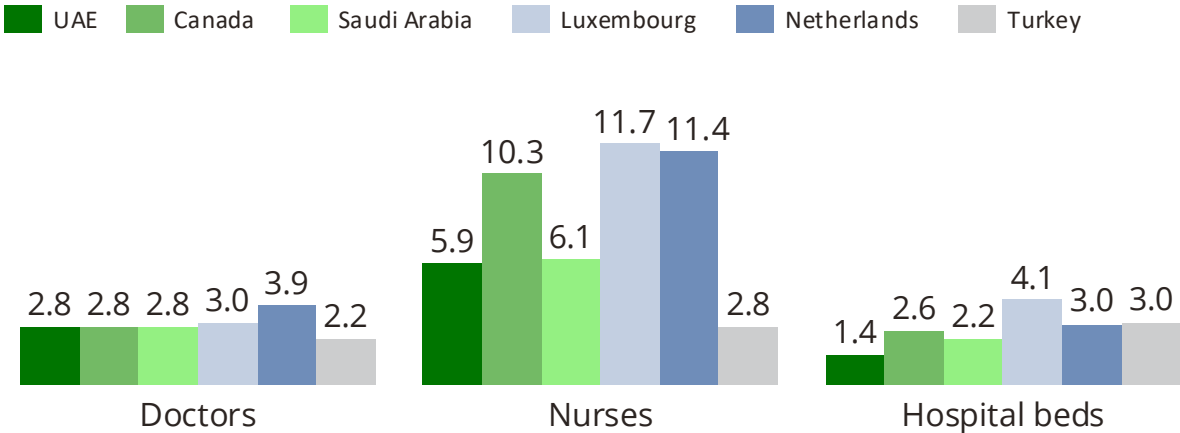
We evaluate the healthcare system based on 4 aspects:

- Extending people's healthy lifespan.** DALE (disability-adjusted life expectancy) is highly correlated with healthcare expenditures per capita and infant mortality rate. We use log values to mitigate systematically inflated prices in certain countries (such as the US and Switzerland) and to highlight differences between developed countries.
- Adequacy of manpower and infrastructure.** For this, we compare the number of doctors, nurses, and hospital beds per capita.
- Financial accessibility.** Expenses for VHI (voluntary health insurance) and out-of-pocket payments indicate the costliness of the system.
- Numbeo's healthcare quality index allows us to account for **patient feedback**.

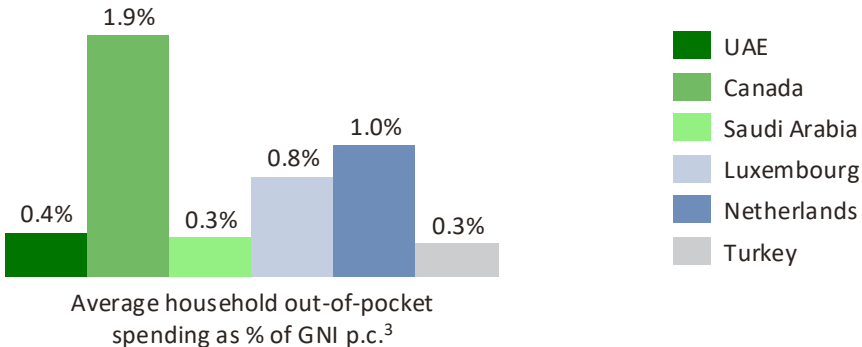


# UAE, Saudi and Turkey seem to have fewer costs on top of insurance premiums

## Infrastructure and manpower (per 1000 people)<sup>1</sup>

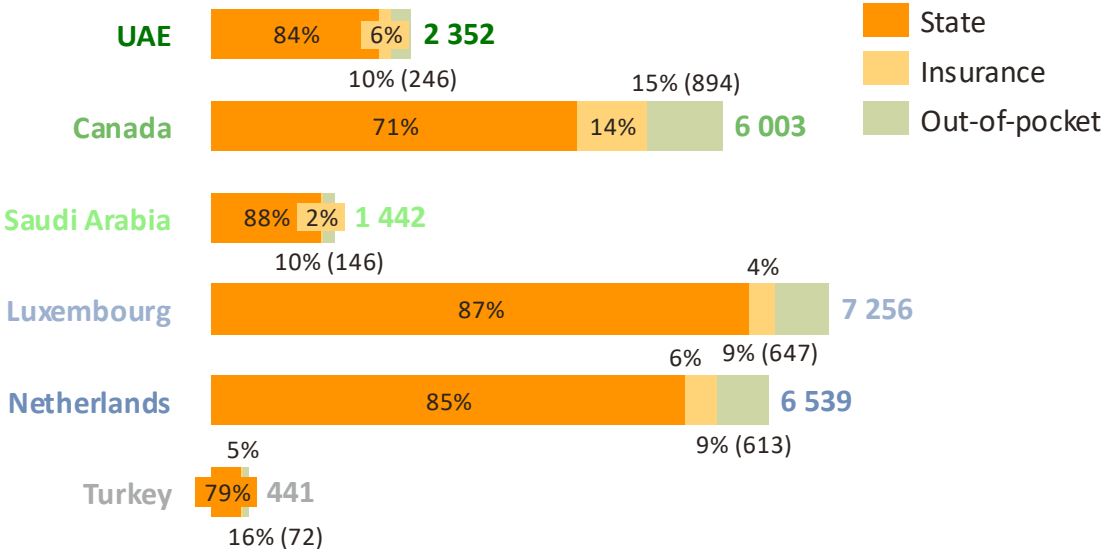


## Costs (per capita, USD in prices of 2021 r.)<sup>2</sup>

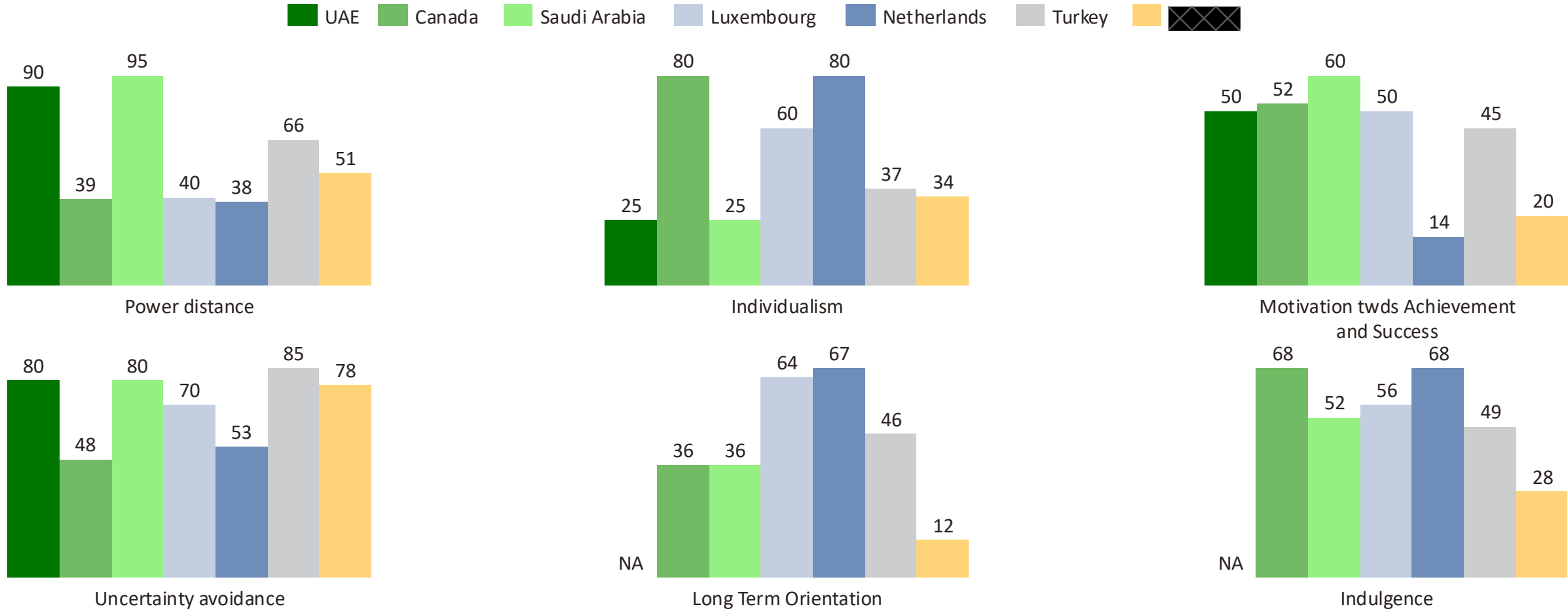


We evaluate the healthcare system based on 4 aspects:

- 1. Extending people's healthy lifespan.** DALE (disability-adjusted life expectancy) is highly correlated with healthcare expenditures per capita and infant mortality rate. We use log values to mitigate systematically inflated prices in certain countries (such as the US and Switzerland) and to highlight differences between developed countries.
- 2. Adequacy of manpower and infrastructure.** For this, we compare the number of doctors, nurses, and hospital beds per capita.
- 3. Financial accessibility.** Expenses for VHI (voluntary health insurance) and out-of-pocket payments indicate the costliness of the system.
- 4. Numbeo's healthcare quality index** allows us to account for **patient feedback**.



# Shortlisted countries compared by aspects of Hofstede's 6d model



# Hofstede's Model Parameters Description

## **Power Distance Index**

High value: Hierarchical society. Unequal distribution of power in society is acceptable. The need for strict hierarchy does not require separate justification.

Low value: Egalitarianism. The rights of all members of society should be equal. A high position in the hierarchy does not give a person the right to treat others condescendingly or enjoy special privileges.

## **Individualism**

High value: Individualism. People should primarily take care of themselves and their close ones, be independent.

Low value: Collectivism. Society should take care of its members, receiving unconditional loyalty in return.

## **Motivation towards Achievement and Success**

High value: Society is competitive and primarily oriented toward personal achievements, financial and career success. Heroism and status are valued.

Low value: Society is more oriented toward cooperation and consensus, high quality of life, helping its less fortunate members. Modesty and volunteering are valued.

## **Uncertainty Avoidance**

High value: Society tries to minimize uncertainty through detailed norms, laws, and traditions.

Low value: Society accepts uncertainty as a given.

## **Long-term Orientation**

High value: Society values pragmatism, persistence, thriftiness, and the ability to adapt to changing conditions.

Low value: Society values old, time-tested traditions and norms.

## **Indulgence**

High value: Society encourages behavior aimed at obtaining pleasure.

Low value: Satisfaction of needs in society is subject to strict norms and propriety; pleasure is not a significant value.



## Vasily Yurenkov



+31 6 31156026



ask@greener.im



<https://greener.im>



[https://www.instagram.com/greener\\_relocation/](https://www.instagram.com/greener_relocation/)



<https://www.facebook.com/greener.relocation.en/>



<https://www.linkedin.com/company/greener-relocation>



# Contacts